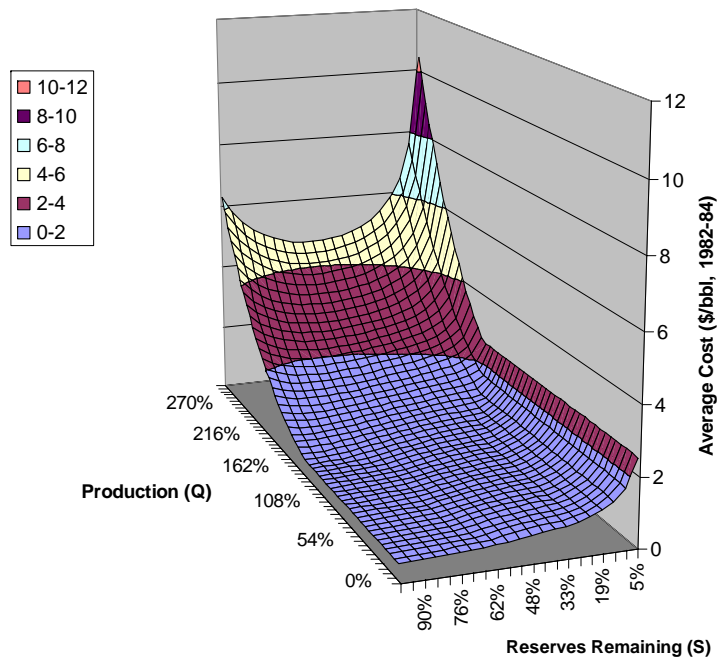


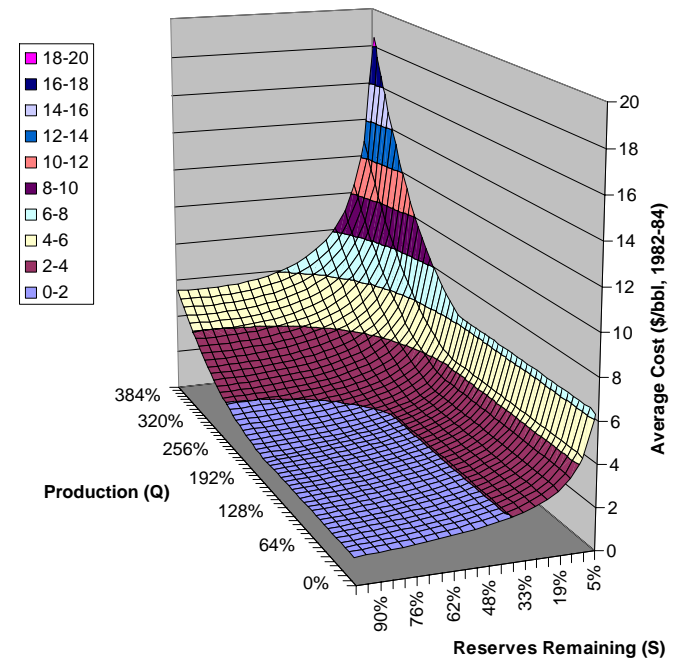
Appendix: Composite Cost Functions

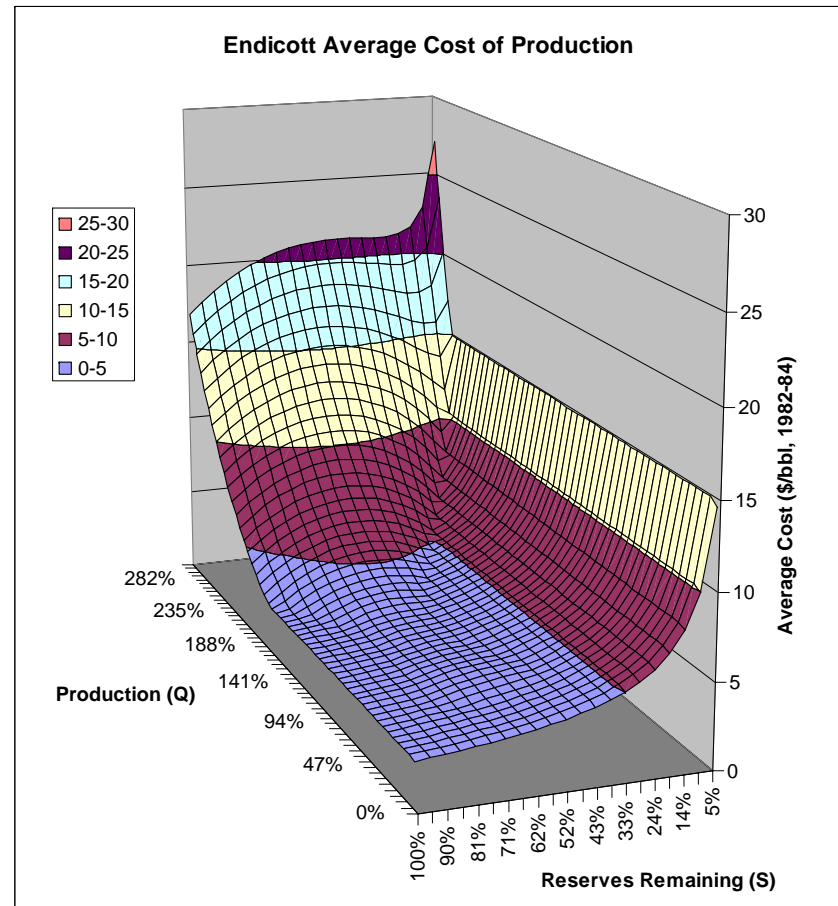
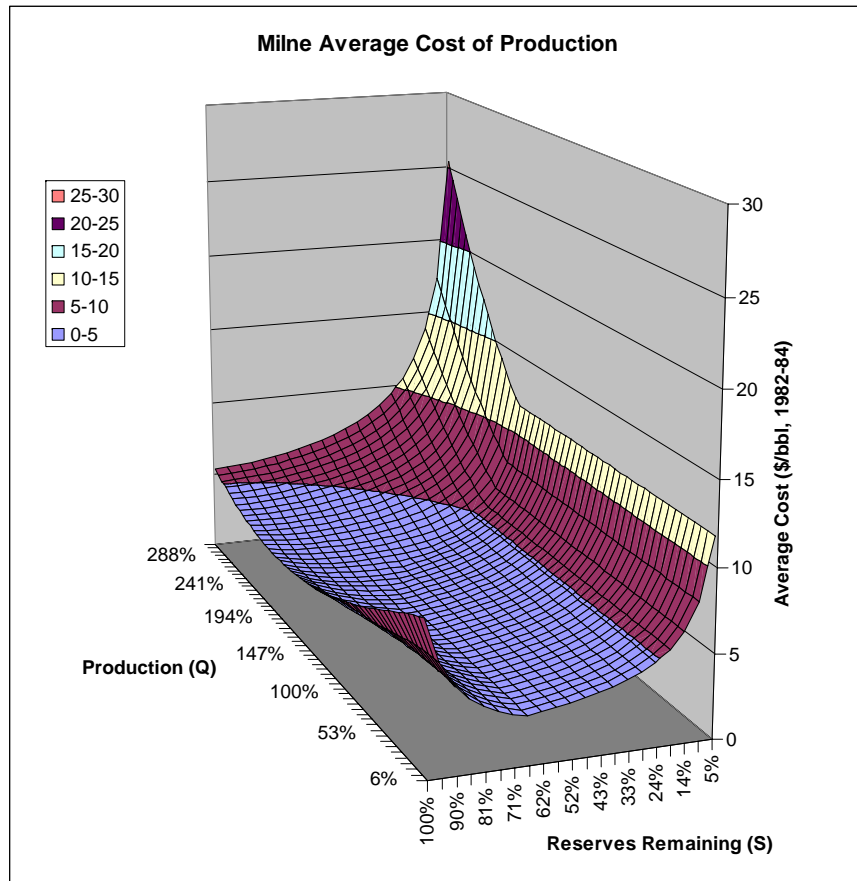
The composite cost functions by field, shown here as average cost (\$/barrel, 1982-84 dollars) rather than total cost for ease of interpretation. The axis for reserves remaining extends from the original quantity of technically recoverable oil to zero. The production axis ranges from zero to three times the maximum historical rate of production. The vertical axis is the average cost of production.

Prudhoe Average Cost of Production

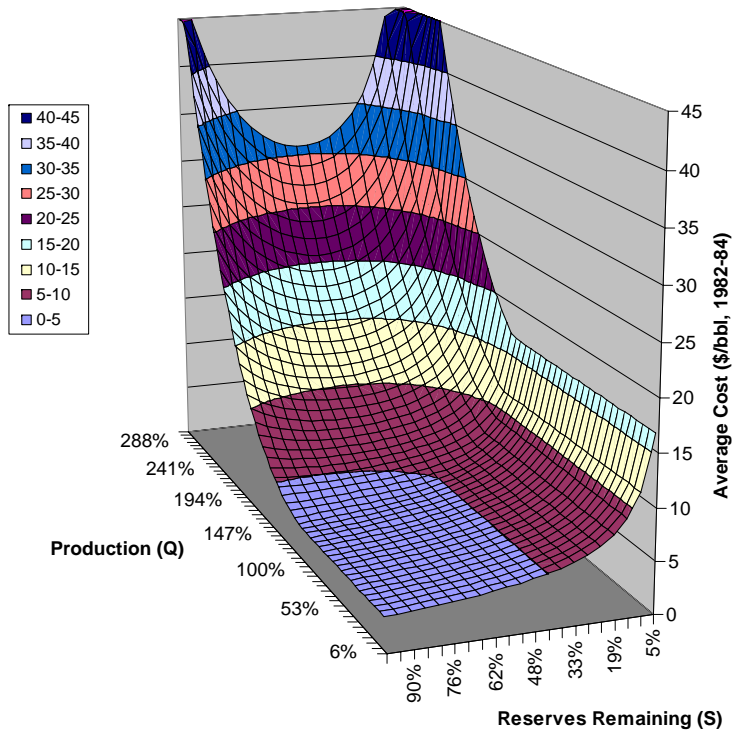


Kuparuk Average Cost of Production





Colville Average Cost of Production



Northstar Average Cost of Production

